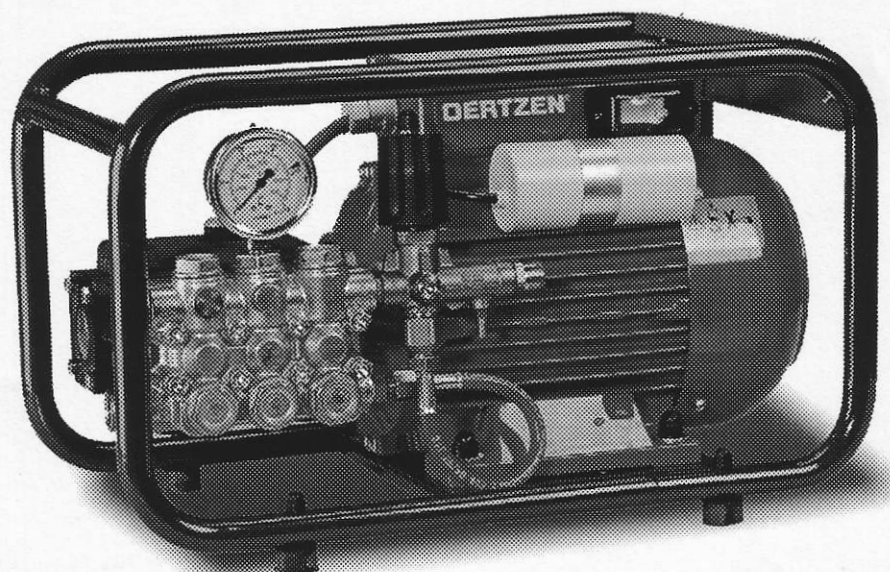


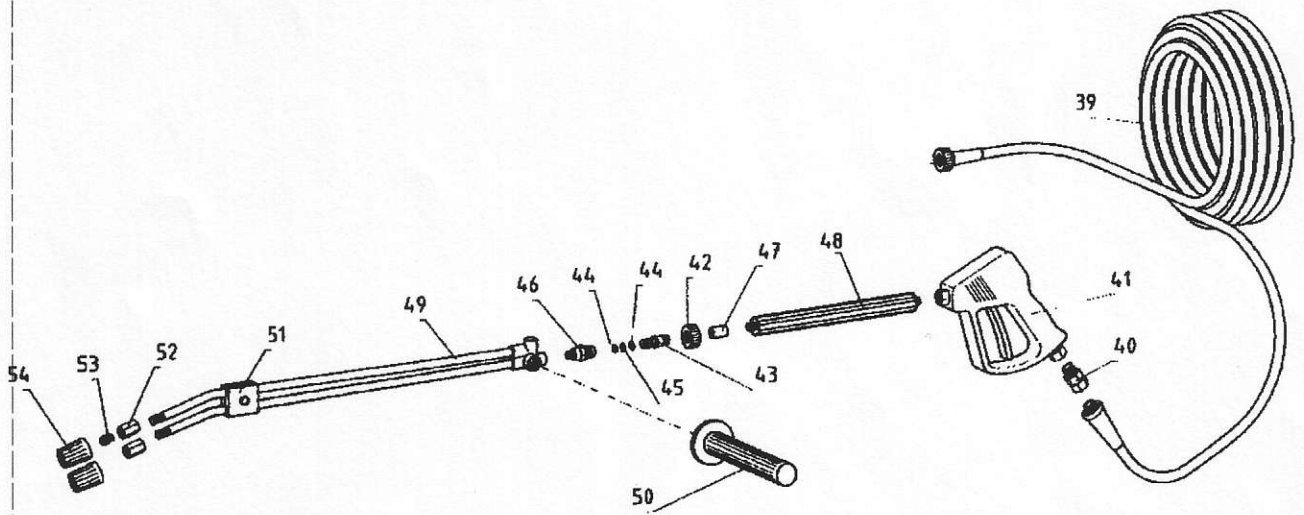
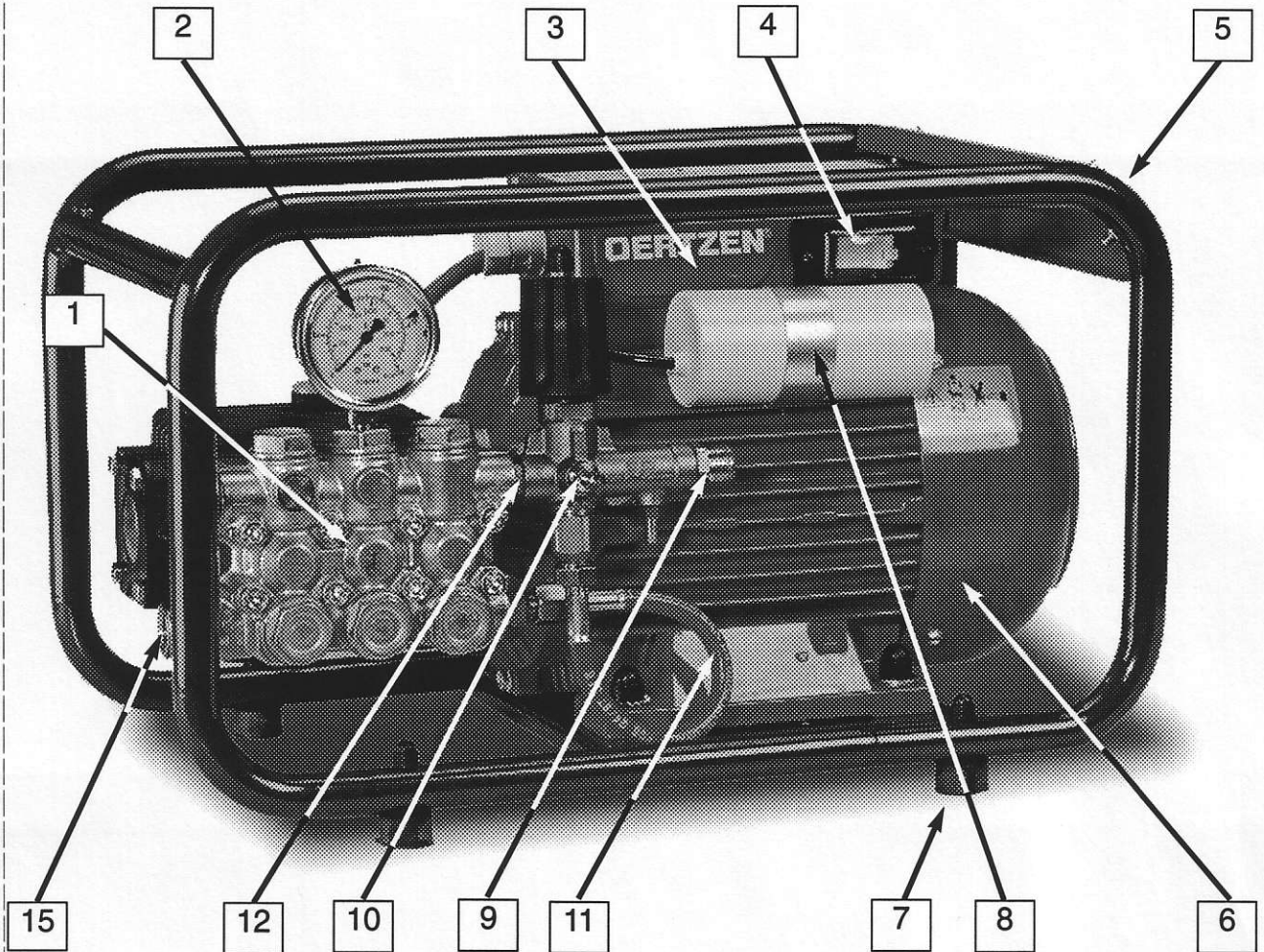
Ersatzteilliste 312/314 Profi

Spare Parts List 312/314 Profi

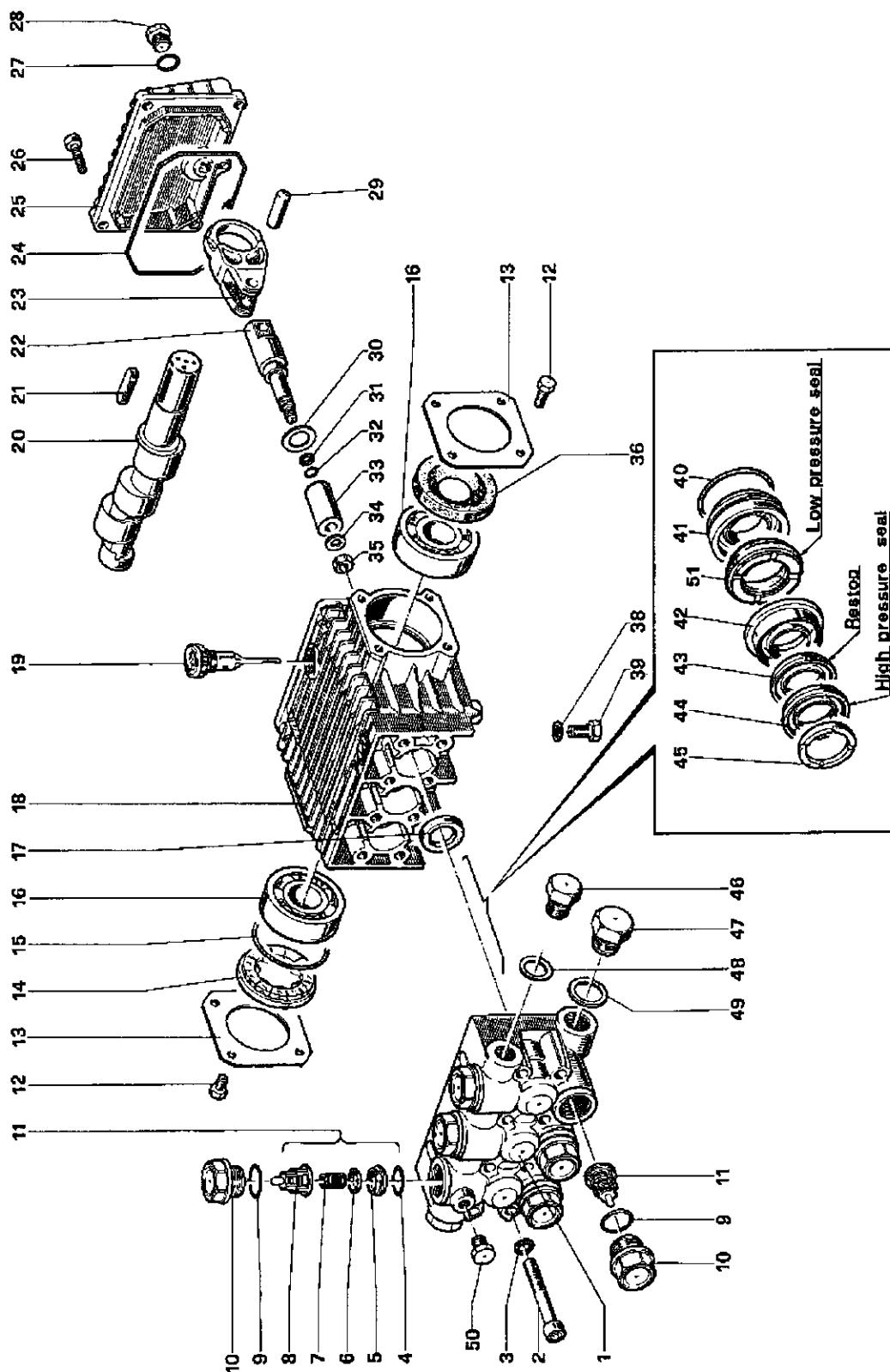


Index

- Nr. 3014 Motor-Pumpe-Wasserführung
Motor-Pump-Waterline
- Nr. 4501 Pumpe / Pump



Pos.	Nummer	Stk	Bezeichnung	Description
Pos.	Part #	pcs		
1	10217161	1	HD-PUMPE 310/318K	HP-Pump 310/ 318K
1	10217160	1	HD-PUMPE 111/185bar 312P 1.450	HP-Pump 312 P
1	10217162	1	HD-PUMPE 131/145bar 314P 1.450	HP-Pump 314P
	10501117	1	PUMPENFLANSCH E-MOT GR. 90mm	Pump Flange f.501.101 Size 90
	10501118	1	PUMPENFLANSCH E-MOT GR.100mm	Pump Flange f.501.102 Size 100
2	11220010	1	STANDMANOMETER 0-250BAR GLYC.K	Pressure Gauge 0-250 bar(Glyc)
3	10409110	1	SCHALTKASTEN PROFI KPL.A.A.	El-Box Plastic (old version)
	10410009	1	NETZANSCHLUSSLEITUNG PROFI CPL	Power Cable PROFI cpl. w. plug
4	10409100	1	MOTORSCHUTZSCHALTER 2POL 12A	Motor Protection Switch 12A/2P
4	10409101	1	MOTORSCHUTZSCHALTER 2POL 16A	Motor Protection Switch 16A/2P
	10409102	1	SCHUTZKAPPE MIT RAHMEN	Switch Cover w. Frame
5	10102261	1	RAHMENANLAGE 310/312/314 Profi	Frame 310/312/314 Profi
6	10501101	1	E-MOTOR 1~230V/50HZ 1,9KW PROF	El-Motor 1x230V/50Hz,1,9kW Pro
6	10501102	1	E-MOTOR 1~230V/50HZ 3,5KW PROF	El.Motor 1~230V/50Hz 3.5kW
	10501113	1	LUEFTERRAD E-MOT GR. 90mm	Fan Wheel for 10.501.101
	10501114	1	LUEFTERRAD E-MOT GR.100mm	Fan Wheel for 10.501.102
	10501115	1	LUEFTERHAUBE E-MOT GR. 90mm	Fan Cover for 501.101
	10501116	1	LUEFTERHAUBE E-MOT GR.100mm	Fan Cover for 501.102
7	10102270	1	BAUSATZ PROFI-GUMMIFUESSE	RubberMount Kit for Profi,4pcs
8	10501120	1	KONDENSATOR 55µF/450V	Capacitor 55µF/450V(2,4HP Mot)
8	10501121	1	KONDENSATOR 65µF/450V	Capacitor 65µF/450V(3.5HP Mot)
9	10703133	1	HV-ANSCHLUSSNIPPEL 3/8"a x OE2	Connector Nipple 3/8"x M22x1.5
10	10304301	1	HD-STEUERVENTIL MIT INJ. 1,8mm	Unloader Valve w.1,8mmInjector
10a	10304314	1	REP.SATZ UMLAUFVENTIL 103043..	RepKit Unloader Valve Cpl.
11	10701060	1	UMLAUFSCHLAUCH 1/4"	Circulation Hose Profi Models
	10003001	1	DOPPELNIPPEL 1/4" MS	Double Nipple 1/4" Brass
12	10003005	1	DOPPELNIPPEL 3/8" RG	Double Nipple 3/8" Bronze
	10003023	1	REDUZIERNIPPEL 3/4"x1/2" MS	Reduct. Nipple 3/4"x1/2" Brass
15	10104064	1	KIT SIEBEINSATZ PROFI <05/99	Strainer Kit PROFI <05/99
39	10702067	1	JET 10m HD-SCHLAUCH 300bar ISO	JET HPHose 10m 300barISO to be deleted
41+48	10700003	1	HD-SICH-PISTOLE 310barISOGRIF	HP-Safety Pistol 310bar,w.Grip
41	10700002	1	HD-SICH-PISTOLE 310bar o.SERVO	HP-Safety Pistol 310bar/150°C
42	10703130	1	HV-MUTTER ROT MS OE2/330bar	Hand Nut M22x1,5 330bar
43	10700110	1	STECKNIPPEL DREHB.1/4"A MAENNL	Male Nipple rotatable 1/4"M
44	10703128	1	O-RING 10,00x2,00 (10 Stck.)	O-Ring 10x2 (pack of 10)
45	11200117	1	BACKUP-RING TEFLON	Back-up Ring Teflon
46	10700100	1	WECHSELNIPPEL 1/4"A WEIBL.DREH	Female Nipple rotatable 1/4"M
	10700021	1	DOPPELLANZE 490mm/DRUCKREG. VA	DoubleWand 490mm/Pressreg. INOX 49+46+51+52+54
53	10743538	1	HIP-STRAHLDUESE 3538(036)	HIP-Nozzle 3538(036)
52+54	10710100	2	DUESENTRAEGER MIT SCHUTZKAPPE	Nozzle Holder w. Prot.Cap
54	10710102	1	DUESENSCHUTZ 2-TEILIG	Nozzle Protection (2parts)



Pos. Pos.	Nummer Part #	Stk pcs	Bezeichnung	Description
	10217160	1	HD-PUMPE 111/185bar 312P 1.450	HP-Pump 312 P
	10217161	1	HD-PUMPE z91/180bar 1.450	HP-Pump 310/ 318K/ 312P 60Hz
	10217162	1	HD-PUMPE 131/145bar 314P 1.450	HP-Pump 314P
1	10217165	1	ZYLINDERKOPF 310/312/318K	Cylinder Head 310/312/318K
1	10217166	1	ZYLINDERKOPF 314P	Cylinder Head 314P
2	10217002	6	INBUSSCHRAUBE M 8x 60	Allen Screw M 8 x 60
3	10217003	6	SCHNORRSCHLEIBE 8,4	Lock Washer 8,4x13x0,8
4	13500129	6	O-RING 17,13x2,62	O-Ring
5-8				S. POS. 11
9	10216215	6	O-RING 20,24x2,62 Sonder	O-Ring Special
10	10217168	5	VENTILSTOPFEN	Valve Plug Profi
10a	10217164	1	VENTILSTOPFEN 1/4" IG	VENTILSTOPFEN 1/4" IG
11	10217169	1	REP.SATZ VENTILE 312/314/318K	Valve Kit 310/312/314/318K
12	10216210	8	SCHRAUBE M 6x 10	Screw M 6x10
13	10217118	2	DECKELBLECH	Covering Plate
14	10217170	1	OELSCHAUGLAS	Oil Eye in Bearing Flange
15	10217120	1	O-RING 55,56x3,53	O-Ring 55,56x3,53
16	10217121	1	RILLENKUGELLAGER 6305 (1Q)	Bearing
17	10217137	3	WEDI 20x30x 5	Oil Seal Ring 20x30x5
18	10217174	1	KURBELGEHAEUSE 310/312/314P	Pump Crankcase 310/312/314P
19	10217123	1	OELPEILSTAB (PROFI)	Oil Dip Stick
20	10217175	1	KURBELWELLE 312P	Crankshaft 312/50Hz;314/60Hz
20	10217176	1	KURBELWELLE 310/314 Profi 318K	Crankshft310/314/50Hz;318K/50~312/60Hz
21	10217177	1	PASSFEDER 9x 7x35 8h	Key
22	10217178	3	FUEHRUNGSKOLBEN	Guiding Piston 310/312/314P
23	10217179	3	PLEUEL	Connecting rod 310/312/314P
24	10217180	1	ED 10227030 O-RING	Seal Ring
25	10217181	1	GEHAEUSEDECKEL	Housing Cover
26	10217126	5	INBUSSCHRAUBE M 6x 14	Allen Screw M 6 x 14
27	10216220	1	O-RING 10,82x1,78	O-Ring 10,82x1,78 Special
28	10216124	1	ABLASS-SCHRAUBE	Drain Plug
29	10217182	3	PLEUELBOLEN	Connecting Rod Pin
30	10217183	3	ABWEISSCHLEIBE	Splash Disc
31	10217184	3	STUETZRING	Ring
32	10217185	3	O-RING 5,28x1,78 Sonder	O-Ring 5,28 x 1,78
33	10217186	3	KERAMIK-PLUNG.15mm310/312/318K	Ceramic Plung.15mm310/312/318K
33	10217190	3	KERAMIK-PLUNG.18mm 314P	Ceramic Plunger 18mm 314P/50Hz
34	10217187	3	SCHLEIBE 8mm	Washer 8mm
34a	10217330	3	ZWISCHENRING	Rosetta
35	10217188	3	SECHSKANTMUTTER M 8 VA	Plunger Nut M8 INOX
36	10217189	1	WEDI 25x62x10 Sonder	Oil Seal 25x62x10 Spec.
40	10217116	3	O-RING 31,47x1,78 Sonder	O-Ring 31,47 x 1,78
41	10217191	3	BODENRING 15mm310/312/318K	Bottom Ring 15mm310/312/318K
41	10217171	3	BODENRING 18mm 314P	Bottom Ring 314 15mm
42	10217192	3	STUETZRING 15mm310/312/318K	Support Ring 15mm310/312/318K
42	10217172	3	STUETZRING 18mm 314P	Support Ring 18mm 314P
45	10217195	6	SPREIZRING 15mm310/312/318K	Spreader Ring 15mm310/312/318K
45	10217173	6	SPREIZRING 18mm 314P	Spreader Ring 18mm 314P
	10217197	1	REP.SATZ MANSCH.310/312/318K	RepKit Seal 15mm310/312/318K

Ersatzteilliste / Spare Part List
 Typ/Baugrp. 310/312/314/318K PUMPE
 Model/Group 310/312/314/318K Pump

Nr. 4501
 Seite 2
 Datum 19-10-00



Pos. Pos.	Nummer Part #	Stk pcs	Bezeichnung	Description
	10217198	1	REP.SATZ MANSCHETTEN 18mm 314P	SoftPartKit Profi 18mm 314P
	10217196	3	REP.SATZ HARDPARTS 15mm 312P	RepKit Seal Hard Parts312P15mm
	10217200	3	REP.SATZ MANSCH.HARDPARTS 314P	RepKit Seal Hard Parts314P18mm

Teil-Nr.	Benennung	Kit für Pumpe 10.217.160/161									
10.217.197	Rep.-Satz										
	Manschette	43	44	51							
		3	3	3							
10.217.196	Manschetten-Kit										
	Hard Parts	40	41	42	43	44	45	51			
		3	3	3	3	3	3	3			
10.217.169	Rep.-Satz										
	Ventile	4	5	6	7	8					
		6	6	6	6	6					

Teil-Nr.	Benennung	Kit für Pumpe 10.217.162									
10.217.198	Rep.-Satz										
	Manschette	43	44	51							
		3	3	3							
10.217.200	Manschetten-Kit										
	Hard Parts	40	41	42	43	44	45	51			
		3	3	3	3	3	3	3			
10.217.169	Rep.-Satz										
	Ventile	4	5	6	7	8					
		6	6	6	6	6					